



MOBILAIR® utility series

Stationary Portable Compressors

With the world-renowned SIGMA PROFILE®
Flow rate 4.35 to 5.4 m³/min (155 – 190 cfm)

www.kaeser.com

M 57utility / M 58utility

In some cases, immediate access to a permanent supply of compressed air is too important to permit the luxury of time for towing a compressor around, finding a place for it, uncoupling it, connecting it, setting it up and then, finally, putting it to use – only to have to repeat the process in reverse once the job has been completed.

This powerful and versatile duo from KAESER makes things much simpler and quicker: both the M 57utility and M 58utility can be set up on the loading bed of an HGV and require only minimal space. This means that there is always enough room for material and tools; consequently the vehicle is transformed into a compact rapid-response unit, making it ideal for applications such as replacing the crash barriers on a motorway, since there is no need to close an entire section of the road. Whether installed on a loading bed or on a construction site, these compact units fit in perfectly wherever they are needed. Designed and optimised for permanent operation from a loading bed, these portable powerhouses offer excellent accessibility to the control panel, fuel tank and oil level gauge from the front side of the unit. Moreover, with additional options such as adjustable machine feet, tool lubricators and compressed air aftercoolers, these machines can be perfectly adapted to the relevant work environment.

Fuel efficiency for greater endurance

Together with a large fuel tank, the powerful combination of an economical Kubota diesel engine (with or without particulate filter) and an efficient KAESER rotary screw airend, equipped with SIGMA PROFILE rotors, enables both of these units to operate continuously for up to ten hours.

M 57 or M 58? Utility is key!

Equipped as standard with a diesel particulate filter, the M 58utility fulfils the requirements of both the EU Stage V and US Tier 4 final emissions standards, making it a welcome operator in Low Emission Zones.

For market regions with lower quality diesel and extreme ambient conditions, the M 57utility is available, without exhaust gas after-treatment.

Excellent accessibility

Once the two cover panels have been removed, all maintenance points are easily accessible from the loading bed side usual for right-hand traffic. All operating fluids can be changed easily via external drain taps, without need of lifting of the unit.

Made In Germany

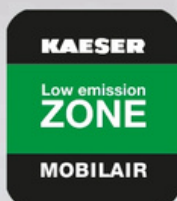
KAESER's renowned MOBILAIR range of portable compressors are manufactured in a state-of-the-art production facility at the company's headquarters in Coburg, Northern Bavaria. Equipped with the very latest technology, the advanced portable compressor plant boasts TÜV-certified sound testing facilities for free-field sound level measurement, an advanced powder-coating installation and highly efficient production logistics.



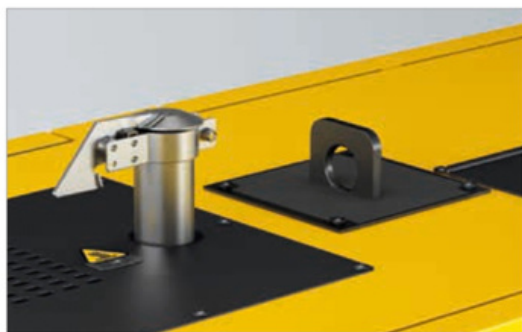
Simply smart

Featuring a push-button start, the SIGMA CONTROL SMART compressor controller allows changeover from unloaded start to load operation so as to ensure an optimal cold-start performance. Furthermore, the desired maximum pressure can be reduced in steps of 0.1 bar down to 6 bar at the push of a button. Protected by a durable metal cover flap, the high-visibility colour display shows all key operating data, such as fuel tank fill level, and counts down the hours to the next scheduled maintenance.

Excellent accessibility, compact design



MOBILAIR
ZONE



Details that count

A fixed lifting eye on top of the housing simplifies transportation, whilst the stainless steel exhaust pipe features a protective flap.



Easy refuelling

Refuelling is via the front face of the unit. The large, 105-litre fuel tank has sufficient capacity to ensure operation for longer than a single work shift.



Clean fluid change

The drainage ports for engine oil, compressor fluid and engine coolant pass through the closed floor pan to the exterior of the unit. There is no need to lift up the machine in order to perform maintenance work.



Suitable for forklifts

Forklift pockets in the closed standard base frame ensure safe, dependable manoeuvrability via forklift truck. Adjustable machine feet are also available as an option.

Available equipment

Optional compressed air aftercooler

The compressed air aftercooler cools the compressed air down to 7 °C above ambient. Because the aftercooler is installed at an angle, any accumulating condensate is easily drained away. This environmentally-friendly design prevents problems caused by freezing in winter, whilst the hot exhaust gases from the engine serve to evaporate the condensate.

Anti-Frost Control as standard

Without the optional compressed air aftercooler, the patented Anti-Frost Control automatically adjusts operating temperature in relation to ambient. In combination with the optional tool lubricator, this feature prevents air tools from freezing up and significantly extends their service life.




Low temperature version

The M57utility and M 58utility are designed as standard to operate in ambient temperatures between -10 °C and +50 °C. A low-temperature version with engine coolant preheating for extremely cold starts is available for use in temperatures below -10 °C.

Adjustable machine feet

Units can be equipped with adjustable machine feet to ensure secure installation on the truck loading bed.

Compressed air treatment system variants

Patented Anti-Frost Control	<p>Anti-Frost Control</p> 	Automatically adjusts operating temperature in relation to ambient temperature to prevent compressed air tools from freezing up
System A - Cool - Condensate free	<p>Compressed air aftercooler</p>  <p>Condensate separator</p> 	Cool, condensate-free compressed air (100 % saturated), for powering air tools and for temporary replacement of stationary compressors

Technical specifications

Model	Compressor				4-cylinder diesel engine (water-cooled)				Complete system				
	Flow rate		Gauge working pressure		Make	Model	Rated engine power	Speed at full load	Fuel tank capacity	Operating weight	Sound power level	Sound pressure level	Compressed air outlet
	m ³ /min	cfm	bar	PSI									
M 57utility	5.4	190	7	100	Kubota	V2403	36	2600	105	980	Export		2 x G ^{3/4} 1 x G1
	4.7	165	10	145									
M 58utility	5.1	180	7	100	Kubota	V2403-CR with DPF	36	2450	105	1020	≤ 98	68	2 x G ^{3/4} 1 x G1
	4.35	155	10	145									

¹⁾ Basic weight without options

²⁾ Guaranteed sound power level as per 2000/14/EC

³⁾ Measured surface sound pressure level as per ISO 3744 (r: 10m)



Dimensions



The world is our home

As one of the world's largest compressed air system providers and compressor manufacturers, KAESER KOMPRESSOREN is represented throughout the world by a comprehensive network of branches, subsidiary companies and authorised partners in over 100 countries.

With innovative products and services, KAESER KOMPRESSOREN's experienced consultants and engineers help customers to enhance their competitive edge by working in close partnership to develop progressive system concepts that continuously push the boundaries of performance and compressed air efficiency.

Moreover, the decades of knowledge and expertise from this industry-leading system provider are made available to each and every customer via the KAESER group's global computer network.

These advantages, coupled with KAESER's worldwide service organisation, ensure that every product operates at the peak of its performance at all times and provides maximum availability.



TEL : 0800 002 056

95 Katere Road, New Plymouth
2/355 Kahikatea Drive, Hamilton

www.pacepower.co.nz